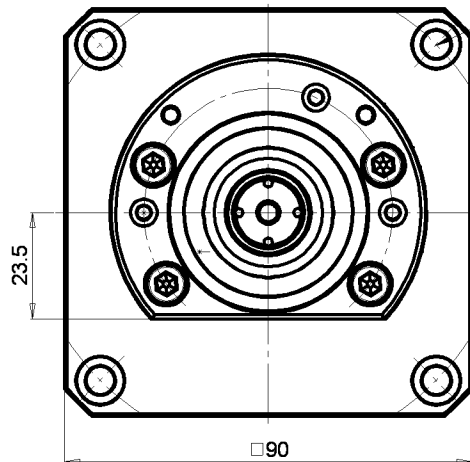
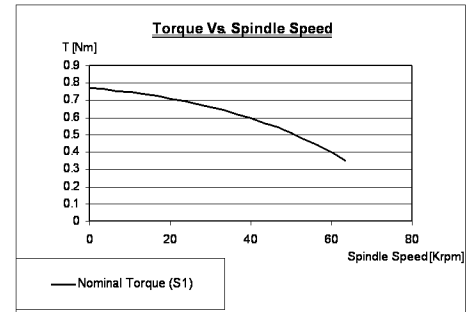
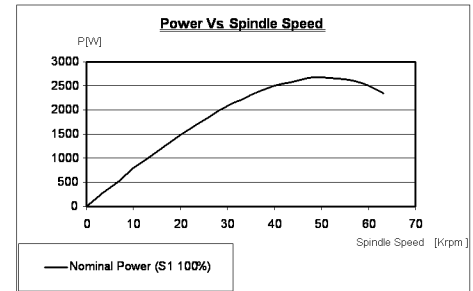
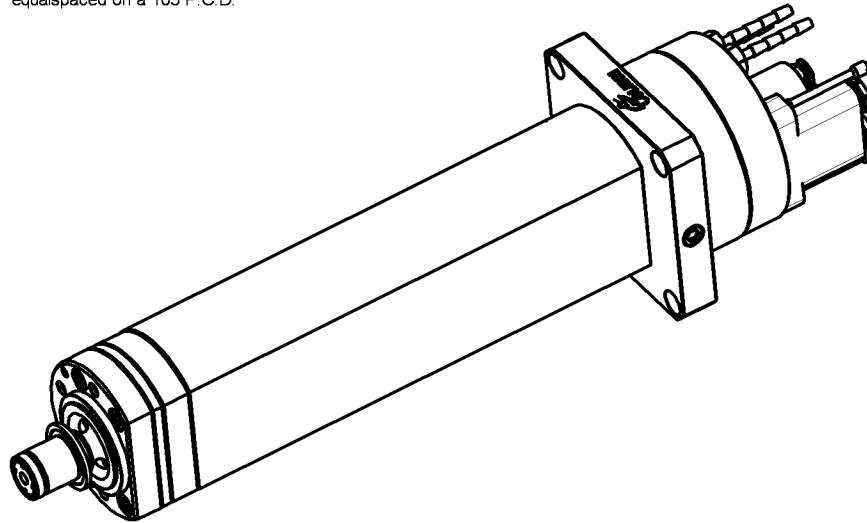


FRONT VIEW



4 holes  $\varnothing 6.3$  through  
c'bored  $\varnothing 10.5 \times 7.0$  deep  
equispaced on a 105 P.C.D.



**SPEC**

air supply pressure 5.5 bar  
 air consumption 75 l/min  
 radial load at P 180 N  
 radial stiffness at P 10 N/micron  
 axial load 180 N  
 axial stiffness 10 N/micron  
 maximum speed 60,000 r.p.m.  
 cooling water flow 1.8 l/min  
 power output 2.4 Kw  
 motor D.C. brushless  
 approx. spindle noise level 68 dB

**AEROSTATIC  
 2" DICING SPINDLE  
 60,000 rpm  
 2400 W**

**COLIBRI**

Spindles Technology

Levon Industrial Park,  
 M. P. Bikat Bet Hakerem  
 25127, Israel  
 Tel: 972-4-908-1304  
 Fax: 972-4-958-9061  
 www.colibrispindles.com

**ZGM-2-00-00-00**

PART

**ASSEMBLY**

DESCRIPTION

PROJECT: **AIR SPINDLE "HF 80 L17 D60"**

Dimensions in mm  
 Unspecified tolerances: +0.1 -0.130  
 Unless otherwise machined surfaces to be 1.6 micron (N7)  
 Break all sharp edges R0.2 max or 0.2x45° chamfer  
 FILE: WISWZigmondZGM-2-00-00

1:1  
 SCALE

SHEET 1 OF 1

REV	DESCRIPTION	NAME	DATE
00	NEW	TANYA	08/09/04