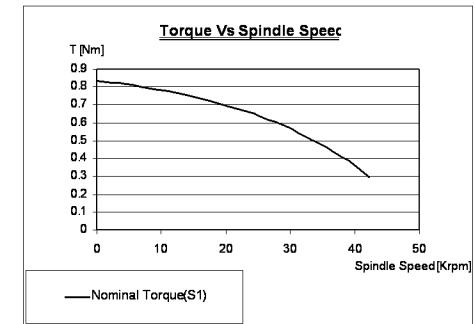
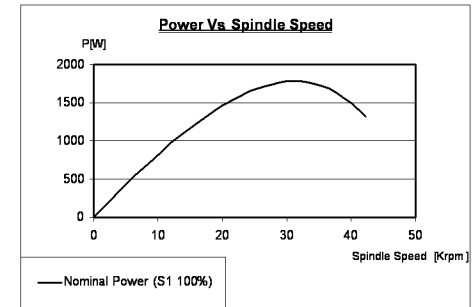
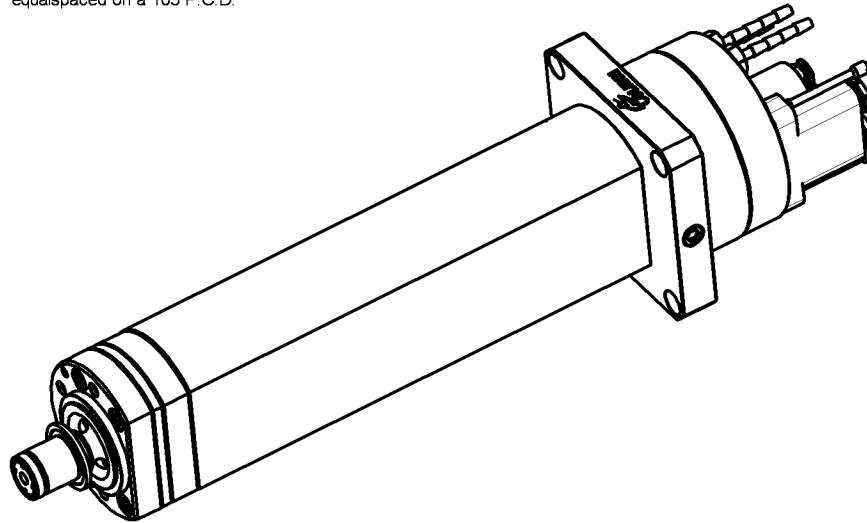
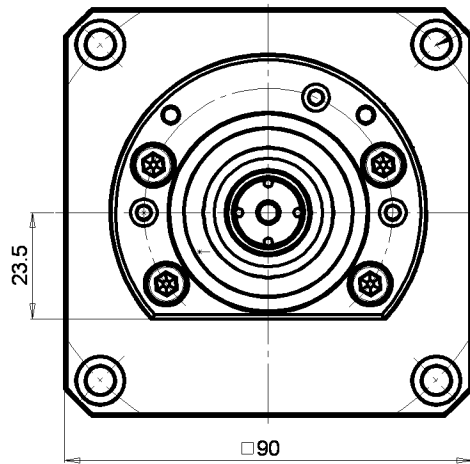


FRONT VIEW

4 holes $\varnothing 6.3$ through
c'bored $\varnothing 10.5 \times 7.0$ deep
equispaced on a 105 P.C.D.



SPEC

air supply pressure	5.5 bar
air consumption	75 l/min
radial load at P	180 N
radial stiffness at P	10 N/micron
axial load	180 N
axial stiffness	10 N/micron
maximum speed	40,000 r.p.m.
cooling water flow	1.8 l/min
power output	1.8 Kw @ 30 Kr.p.m.
motor	D.C. brushless
spindle noise level	68 dB

**AEROSTATIC
2" DICING SPINDLE
40,000 rpm
1800 W**

COLIBRI

Spindles Technology

Levon Industrial Park,
M. P. Bikat Bet Hakerem
25127, Israel
Tel: 972-4-908-1304
Fax: 972-4-958-9061
www.colibrispindles.com

ZGM-1-00-00-00

PART

PROJECT: **AIR SPINDLE "HF 80 L11 D40"**

Dimensions in mm
Unless otherwise machined surfaces to be 1.6 micron (N7)
Break all sharp edges R0.2 max or 0.2x45° chamfer
FILE: WISWZigmondZGM-1-00-00

ASSEMBLY

DESCRIPTION

1:1
SCALE

SHEET 1 OF 1

REV	DESCRIPTION	NAME	DATE
00	NEW	TANYA	28/10/08