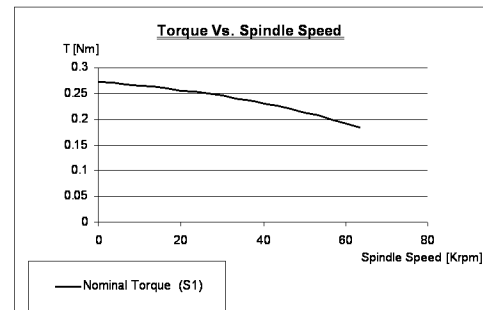
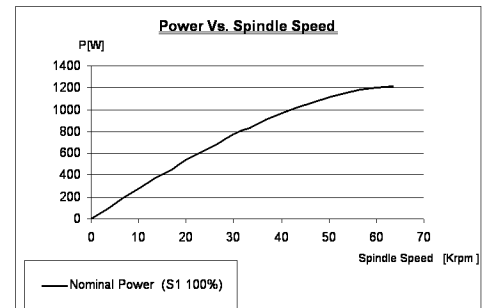
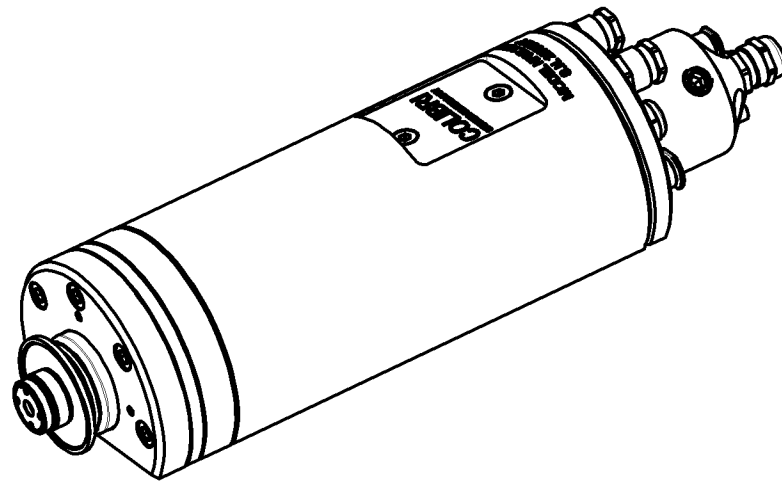
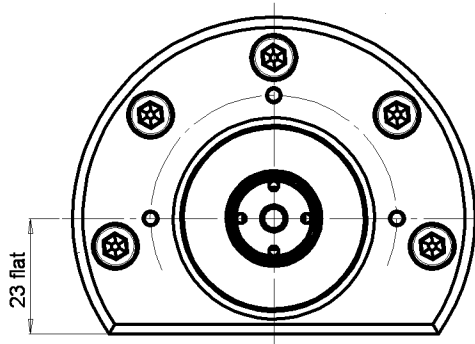


FRONT VIEW



**SPEC**

air supply pressure	5.0 - 5.5 bar
air consumption	60 l/min @ 5.0 bar
radial load at P	130 N @ 5.0 bar
axial load	150 N @ 5.0 bar
radial stiffness	8 N/mic
axial stiffness	9 N/mic
maximum speed	60,000 r.p.m.
min cooling water flow	1.0 l/min
power output	1.2 Kw
motor	D.C. brushless
continuous stall torque	0.3 Nm
number of poles	6
spindle noise level	70 dB max
spindle weight	6.2 kg

**AEROSTATIC  
2" DICING SPINDLE  
60,000 rpm  
1200 W**

**COLIBRI**

Spindles Technology

Levon Industrial Park,  
M. P. Bikat Bet Hakerem  
25127, Israel  
Tel: 972-4-908-1304  
Fax: 972-4-958-9061  
www.colibrispindles.com

**BOP-1-00-00-00**

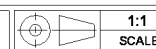
**ASSEMBLY**

PART

DESCRIPTION

PROJECT: **AIR SPINDLE "HF 80 L15 D60"**

Dimensions in mm  
Unless otherwise machined surfaces to be 1.6 micron (N7)  
Break all sharp edges R0.2 max or 0.2x45° chamfer



FILE: W15MBopBOP-1-00-00

SHEET 1 OF 1

REV	DESCRIPTION	NAME	DATE
00	NEW	TANYA	09/01/04